

# CHARMILL

RESIDENTIAL



Oppidans Road, Primrose Hill NW3

£2,423



4



2



2



C



# Oppidans Road



## Description

An exceptional modern four bedroom town house located on Oppidans Road in the heart of Primrose Hill. The house has been recently refurbished throughout and is arranged over four floors comprising a spacious kitchen/dining room, guest cloakroom and utility room on the ground floor. The first floor of this impressive house has two reception rooms with wooden flooring. The second floor offers a generously sized principal bedroom with walk-in wardrobe leading to an en-suite shower room and a further double bedroom. The third floor comprises two further double bedrooms and a family bathroom. This beautiful home also benefits from direct access from the kitchen/dining room to a well maintained communal garden and benefits from a driveway for two cars. Oppidans Road is within walking distance to the vast array of fashionable shops, cafes and restaurants on Regents Park Road and the much sought after Primrose Hill Park with spectacular views of London's skyline. Viewings are highly recommended. Available furnished or unfurnished.

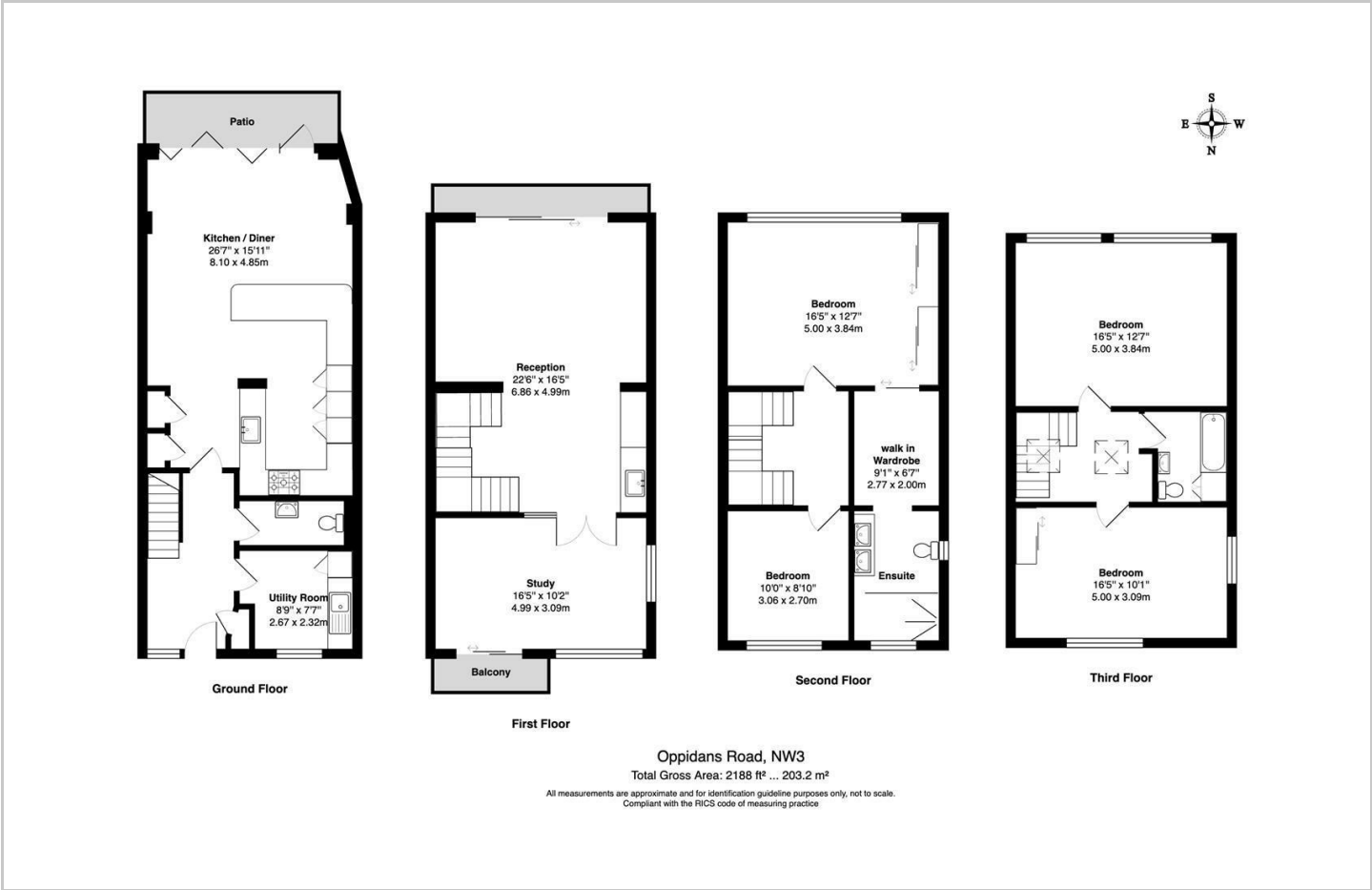
- Reception room
- Two bathrooms
- Utility room
- Communal garden
- Town house
- Eat-in kitchen
- Guest cloakroom
- Off street parking for 2 cars
- Wooden flooring



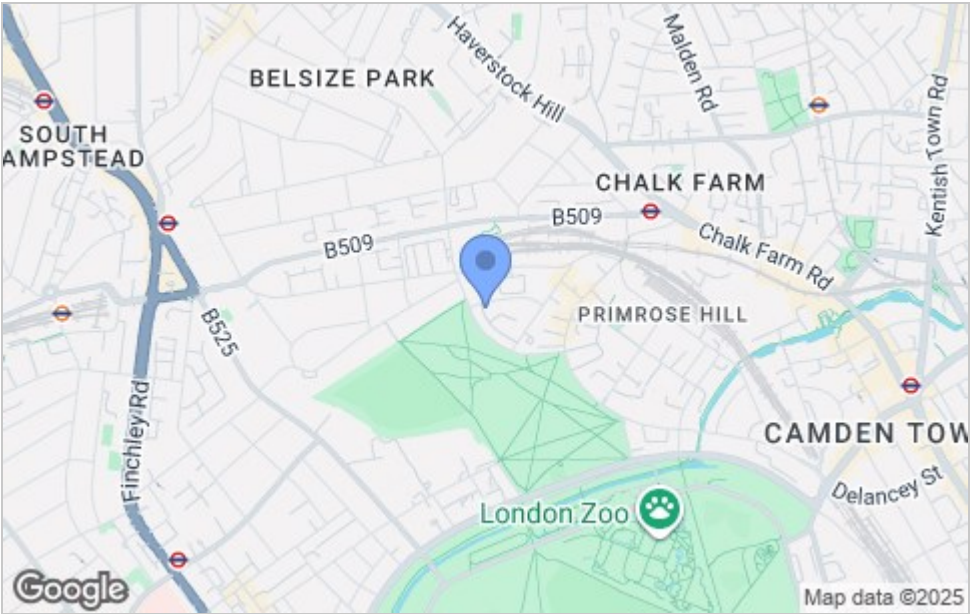




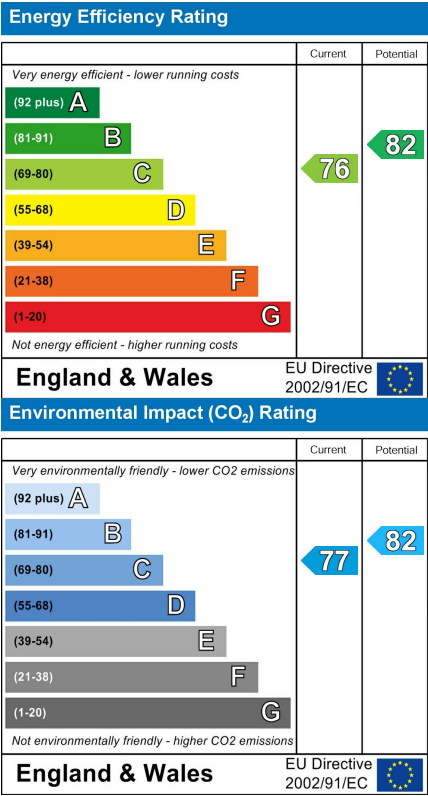
Floor Plan



Area Map



Energy Efficiency Graph



Viewing

Please contact our Lettings Team on 020 7046 6276 if you wish to arrange a viewing appointment for this property or require further information.



These particulars, whilst believed to be accurate are set out as a general outline only for guidance and do not constitute any part of an offer or contract. Intending purchasers should not rely on them as statements of representation of fact, but must satisfy themselves by inspection or otherwise as to their accuracy. No person in this firms employment has the authority to make or give any representation or warranty in respect of the property.

020 7046 6276 • [lettings@charmilleresidential.co.uk](mailto:lettings@charmilleresidential.co.uk) • 51 Maida Vale, Little Venice, London W9 1SD  
[charmilleresidential.co.uk](http://charmilleresidential.co.uk)